

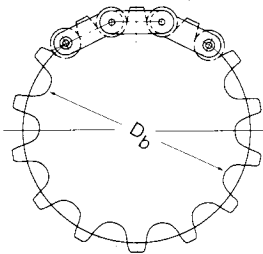
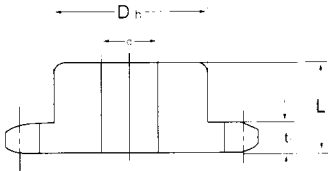
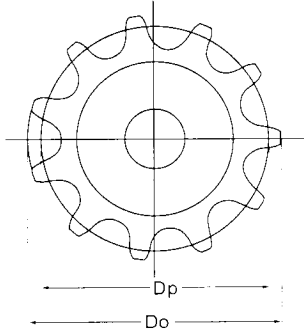
Double-Pitch Roller Chain Sprockets R Type

R 型滚子链链轮

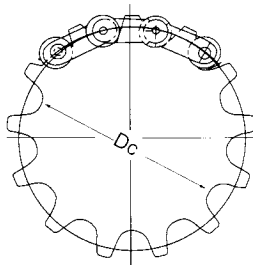
R 型滚子链链轮是单切齿的双节跑链轮。

R-type Roller Chain Sprockets

The R-type roller chain sprockets are single-cut double pitch sprockets.



Even number of teeth 14



ODD number of teeth 13

- 注：1. 底径用于偶数齿，卡尺测量直径用于奇数齿
2. 阴影部分表示齿部淬火的库存链轮
3. P: 链条节距。b₁: 内链节内宽。Dr: 滚子直径

Note:

- Bottom diameter for even number of teeth. Caliper diameter for odd number of teeth.
- SHADED ZONE is hardened teeth stock sprockets.
- P: Chain Pitch. b₁: Distance between inside links. Dr: Roller diameter.

2042(t=7.2) p=25.4 b₁=7.85 Dr=15.88

No. of Working teeth	Pitch Dia Dp	Outside Dia Do	Caliper Dia Db or Dc	Bore Dia d		Hub		Sprock Weight (kg)
				Min	Max	Dia Dh	Length L	
10	82.20	93	66.32	20	35	56	40	0.85
11	90.16	102	73.36	20	35	56	40	0.91
12	98.14	110	82.26	20	35	56	40	0.97
13	106.14	118	89.48	20	35	56	40	1.05
14	114.15	127	98.27	20	35	56	40	1.12
15	122.17	135	105.62	20	42	65	40	1.43
16	130.20	143	114.32	20	42	65	40	1.52
18	146.27	159	130.39	20	42	65	40	1.72
20	162.37	176	146.49	20	46	70	45	2.21
24	194.60	208	178.72	25	50	75	50	2.97
25	202.66	216	186.38	25	50	75	50	3.12
26	210.72	224	194.84	25	50	75	50	3.26
28	226.86	241	210.98	25	50	75	50	3.58
30	243.00	257	227.12	25	50	75	50	3.91

2052(t=8.7) p=31.75 b₁=9.40 Dr=19.05

10	102.75	117	83.70	25	46	70	45	1.49
11	112.70	127	92.50	25	46	70	45	1.60
12	122.67	138	103.62	25	46	70	45	1.73
13	132.67	148	112.65	25	46	70	45	1.86
14	142.68	158	123.63	25	46	70	45	2.01
15	152.71	168	132.82	25	46	70	45	2.17
16	162.74	179	143.69	25	46	70	45	2.24
18	182.84	199	163.79	25	46	70	45	2.71
20	202.96	220	183.91	25	50	75	50	3.45
24	243.25	260	224.20	25	57	85	60	5.23
25	253.32	270	233.78	25	57	85	60	5.50
26	263.40	281	244.35	25	57	85	60	5.78
28	283.57	301	264.52	25	57	85	60	6.37
30	303.75	321	284.70	25	57	85	60	7.00

2062(t=11.7) p=38.10 b₁=12.57 Dr=22.23

10	123.30	140	101.07	25	52	80	45	2.23
11	135.24	153	111.63	25	52	80	45	2.45
12	147.21	165	124.98	25	52	80	45	2.70
13	159.20	177	135.81	25	52	80	45	2.97
14	171.22	190	148.99	25	52	80	45	3.25
15	183.25	202	160.02	25	57	85	50	3.94
16	195.29	214	173.06	25	57	85	50	4.27
18	219.41	239	197.18	25	57	85	55	5.19
20	243.55	263	221.32	25	57	85	55	6.00
24	291.90	312	269.67	25	57	85	55	7.87
25	303.99	324	281.16	25	57	85	55	8.39
26	316.09	337	293.86	25	57	85	55	8.93
28	340.29	361	318.06	25	63	95	65	11.1
30	364.50	385	342.27	25	63	95	65	12.3

2062(t=14.6) p=50.80 b₁=15.75 Dr=28.58

10	164.39	187	135.81	25	63	95	65	4.90
11	180.31	204	149.90	25	63	95	65	5.48
12	196.28	220	167.70	25	63	95	65	6.02
13	212.27	237	182.14	25	63	95	65	6.61
14	228.30	253	199.72	25	63	95	65	7.25
15	244.33	269	214.42	25	63	95	65	7.93
16	260.39	286	231.81	25	63	95	65	8.66
18	292.55	319	263.97	25	72	105	75	11.5
20	324.74	351	296.16	25	72	105	75	13.3
24	389.19	416	360.61	25	72	105	75	17.5
25	405.32	433	375.94	25	72	105	75	18.6
26	421.45	449	392.87	25	72	105	75	19.8
28	453.72	481	425.14	25	78	115	85	23.9
30	485.99	514	457.41	25	78	115	85	26.7