

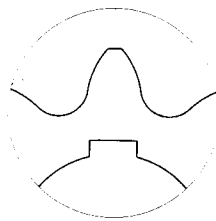
Finished Bore sprockets

For Roller Chains DIN8187-ISO/R606

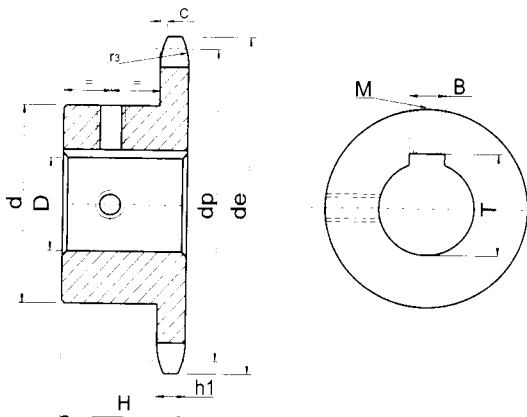


All sprockets are finished with induction hardened teeth. This treatment gives a longer lasting life to sprockets. And with finished bore, keyway and 2 grub screws, this eliminates further modification by customer and can be fitted immediately.

Bore-Keyway-Screws



Keyway is located on center line of tooth.



D(H7)	B(H9)	T		M
10	4	D+1.8	(+0.1/0)	M3
11	4	D+1.8	(+0.1/0)	M3
12	4	D+1.8	(+0.1/0)	M3
14	5	D+2.3	(+0.1/0)	M4
16	5	D+2.3	(+0.1/0)	M4
18	6	D+2.8	(+0.1/0)	M5
19	6	D+2.8	(+0.1/0)	M5
20	6	D+2.8	(+0.1/0)	M5
22	6	D+2.8	(+0.1/0)	M5
24	8	D+3.3	(+0.2/0)	M6
25	8	D+3.3	(+0.2/0)	M6
28	8	D+3.3	(+0.2/0)	M6
30	8	D+3.3	(+0.2/0)	M6
32	10	D+3.3	(+0.2/0)	M8
35	10	D+3.3	(+0.2/0)	M8
38	10	D+3.3	(+0.2/0)	M8
40	12	D+3.3	(+0.2/0)	M10
42	12	D+3.3	(+0.2/0)	M10
45	14	D+3.8	(+0.2/0)	M12
48	14	D+3.8	(+0.2/0)	M12
50	14	D+3.8	(+0.2/0)	M12
60	18	D+4.4	(+0.2/0)	M12
65	18	D+4.4	(+0.2/0)	M12
70	20	D+4.9	(+0.2/0)	M12