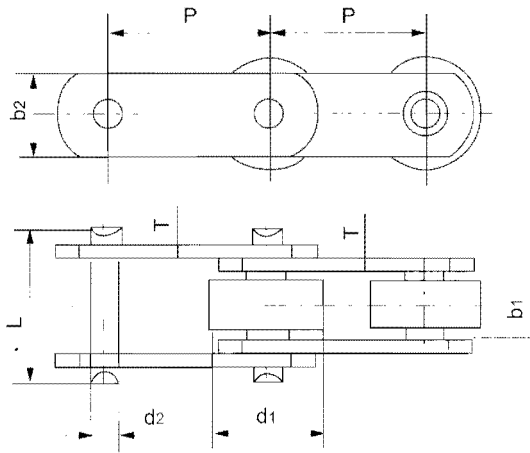
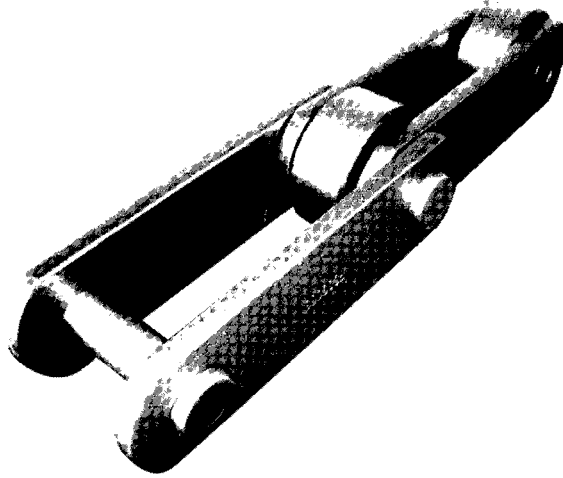




British Series Long Pitch conveyor Chain

DCC



| 链号 Chain No. | 节距 Pitch P mm | 内节内宽 Inner Width of Inner Link b1(min) mm | 销轴直径 Diameter of Pin d2(max) mm | 销轴长度 Length of Pin L(max) mm | 链板厚度 Thickness of Sidebar T(max) mm | 链板高度 Height of Sidebar b2(max) mm | 滚子直径 Diameter of Roller d1(max) mm | 抗拉强度 Tensile Strength Q(max) KN | 每米重量 Weight per Meter q kg/m |
|-----------------|------------------------|--|--|---------------------------------------|--|--|---|--|---------------------------------------|
| 3DC9503R | 76.7 | 30 | 14.27 | 70 | 6.3 | 38.1 | 29.0 | 170 | 9.4 |
| 4DC7.5 | 101.6 | 15.24 | 13.97 | 46 | 5.08 | 25.4 | 31.75 | 40.5 | 2.8 |
| 4DC20R | 1001.6 | 19.05 | 19.05 | 51 | 5.08 | 39 | 47.6 | 88.9 | 6.9 |
| 4DC90R | 101.6 | 22.2 | 11.1 | 53 | 4.5 | 32 | 47.6 | 89.9 | 6.2 |
| 4DC94R | 101.6 | 30.0 | 14.27 | 70 | 6.3 | 38.1 | 50.8 | 133.4 | 10.0 |
| 6DC15R | 152.4 | 19.05 | 19.05 | 51 | 5.08 | 39 | 47.6 | 88.9 | 5.7 |
| 6DC604R | 152.4 | 30.0 | 14.27 | 70 | 6.3 | 38.1 | 50.8 | 133.4 | 7.9 |
| 6DC36R | 152.4 | 25.4 | 26.92 | 70 | 6.5/7.8 | 50.8 | 66.7 | 160 | 11.9 |
| C09060 | 152.4 | 37.7 | 18.9 | 94.3 | 9.5 | 50.8 | 69.85 | 266.6 | 27.5 |
| C09061 | 152.4 | 37.7 | 18.9 | 95.2 | 9.5 | 57.2 | 69.85 | 377.9 | 29.5 |
| C09063 | 152.4 | 38.0 | 23.83 | 102 | 9.7 | 61.9 | 76.2 | 635 | 20.3 |

注：1.可根据用户来图，参考此表数据设计制造其他节距链条。 2.可加工外、内弯附板(A2、K2)以不同间距组装成弯板输送链。

Notes: 1. Chains with other pitches can be designed and manufactured according to customer's drawing with reference of data in this table.

2. It can process inner or outer curved plate (A2, K2) which can be assembled into offset plate transport chain with different interval distance.