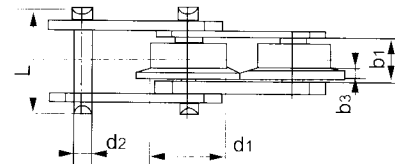
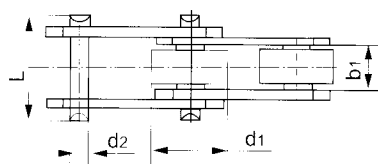
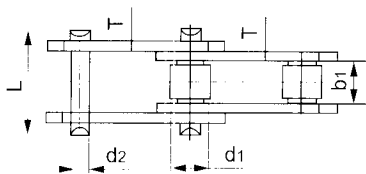
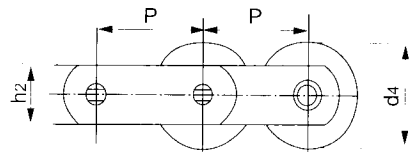
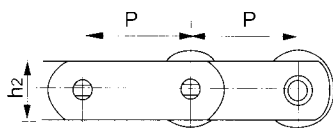
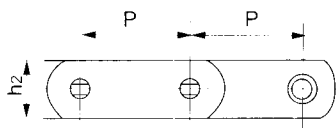


"S"型滚子
Small Roller

"P"型滚子
Plain Roller

"F"型滚子
Flanged Roller



ISO 链号	节距 Pitch							内节内宽 Inner Width of Inner Link b1(max) mm	销轴直径 Diameter of Pin d2(max) mm	销轴长度 Length of Pin L(max) mm	S型滚子直径 Diameter of Small Roller d1(max) mm	P型滚子直径 Diameter of Plain Roller d1(max) mm	F型滚子 Flanged Roller		链板高度 Height of Sidebar h2(max) mm	抗拉强度 Tensile Strength Q(min) KN
	P mm												边缘直径 Diameter of Edge d4(max) mm	边缘直径 Diameter of Edge d4(max) mm		
M20	40	50	63	80	100	125	160	15	6.0	30	12.5	25	35	35	19	20
M28	50	63	80	100	125	160	200	17	7.0	35	15.0	30	40	40	21	28
M40	63	80	100	125	160	200	250	19	8.5	40	18.0	36	45	45	26	40
M56	63	80	100	125	160	200	250	23	10.0	45	21.0	42	55	55	31	56
M80	80	100	125	160	200	250	315	27	12.0	53	25.0	50	65	65	36	80
M112	80	100	125	160	200	250	315	31	15.0	62	30.0	60	75	75	41	112
M160	100	125	160	200	250	315	400	36	18.0	73	36.0	70	90	90	51	160
M224	125	160	200	250	315	400	500	42	21.0	85	42.0	85	105	105	62	224
M315	160	200	250	315	400	500	630	47	25.0	98	50.0	100	125	125	72	315
M450	200	250	315	400	500	630	800	55	30.0	112	60.0	120	150	150	82	450
M630	250	315	400	500	630	800	1000	65	36.0	135	70.0	140	175	175	103	630
M900	250	315	400	500	630	800	1000	76	44.0	154	85.0	170	210	210	123	900
FM10100	100							30	14.29	64.4		50			38	112.7
FM10500	150							22.2	11.1	51	22.2	40			32	68.6
FM5100	100							22.2				40	50	50	32	68.6
FM5150	150							22.2	11.1	51		40	50	50	32	68.6
FM3100	100							16.1	7.94	34		31.8			22	29.4
FM3075	75							16.1	7.94	34		31.8			22	29.4